

SPANISH TOWN HIGH SCHOOL UNIFORM PATTERN

GRADE 11 GIRLS (UPPER SCHOOL 2023 - 2024)

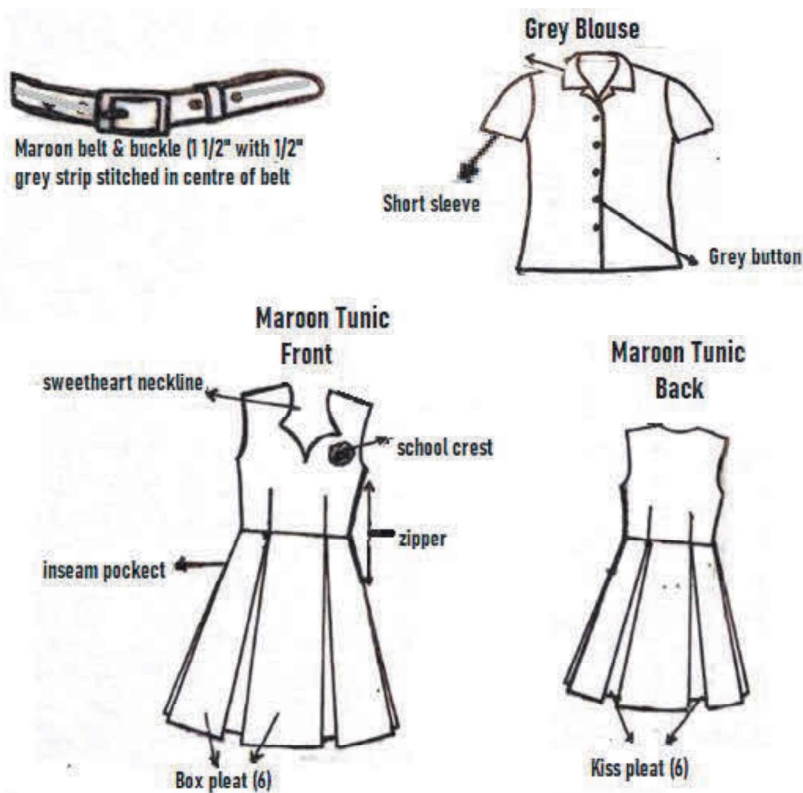
GRADE 11 GIRLS wear:

TUNIC AND BLOUSE

- **GREY BLOUSE WITH SHIRT COLLAR AND SHORT SLEEVE (8" LONG).**
- **MAROON TUNIC** with 6 box pleats - 3 in front and 3 in back with 6 kiss pleats - 2 in front, 2 in back and 2 at the side - **PLEATS ARE NOT TO BE STITCHED BELOW WAISTLINE.**
- TUNIC should be **5 INCHES BELOW THE KNEES.**
- TUNIC must have sweetheart neckline (see diagram).
- Tunic should have 18 inches side zipper on the left and a pocket on the right side.
- **SCHOOL'S CREST** should be **STITCHED ON THE LEFT SIDE OF TUNIC.**
- **BLACK SHOES AND BLACK SOCKS** (socks must be visible and folded at the ankle).
- **MAROON BELT & BUCKLE** - 1½ inches WIDE with **½ INCH GREY STRIP STITCHED IN THE CENTRE OF BELT.**

PREFECTS - GIRLS wear:

- **WHITE BLOUSE** with short sleeves (8" LONG) and shirt collar.
- **SCHOOL'S CREST** should be **STITCHED** on the pocket on the left of the blouse
- **SCHOOL TIE** with school logo and stripes
- **MAROON BELT & BUCKLE** - 1½ inches WIDE with **½ INCH GREY STRIP STITCHED IN THE CENTRE OF BELT.**
- **THE SKIRT** should be **5 INCHES BELOW THE KNEES.**



SPANISH TOWN HIGH SCHOOL UNIFORM PATTERN

GRADE 11 BOYS (UPPER SCHOOL 2023 - 2024)

GRADE 11 BOYS wear:

KHAKI SHIRTS with short sleeves (8" LONG)

- Shirt should not fit close to upper body.
- Shirt side should not be altered from the original style.
- Shirt should be 8 - 10 inches below the natural waistline (so that it can be properly tucked and stay in the pants).
- Under shirts must not be visible (V-neck under shirt or merino is recommended either black or white).
- Shirt should have Maroon Epaulettes with FOUR (4) vertical GREY STRIPES stitched on each. Epaulettes are sold at the school.

KHAKI PANTS

- Pants must fit the natural waistline to **AVOID ADJUSTING** the waistline.
- Pants should not be worn on the hip for school.
- Pants legs should free flowing to allow movement.
- Pants legs should **NOT BE STITCHED-IN** at the knee or lower leg section of pants.
- BLACK LEATHER BELT with standard buckle - Designer buckle is not allowed.
- BLACK SHOES and BLACK SOCKS (Not ankle socks)
- No coloured patterns or accessories on shoes - No sneakers will be allowed.

PREFECTS - BOYS wear:

- **WHITE SHIRT** with short sleeves (8"LONG)
- **KHAKI PANTS** - Pants legs should **NOT BE STITCHED-IN**.
- **SCHOOL TIE** with school logo and stripes **MUST** be worn with white shirt.
- **SCHOOL'S CREST** should be STITCHED on the pocket on the left
- **SCHOOL TIE** with school logo and stripes

